



CROWN IMPERIAL ASSEMBLY INSTRUCTIONS

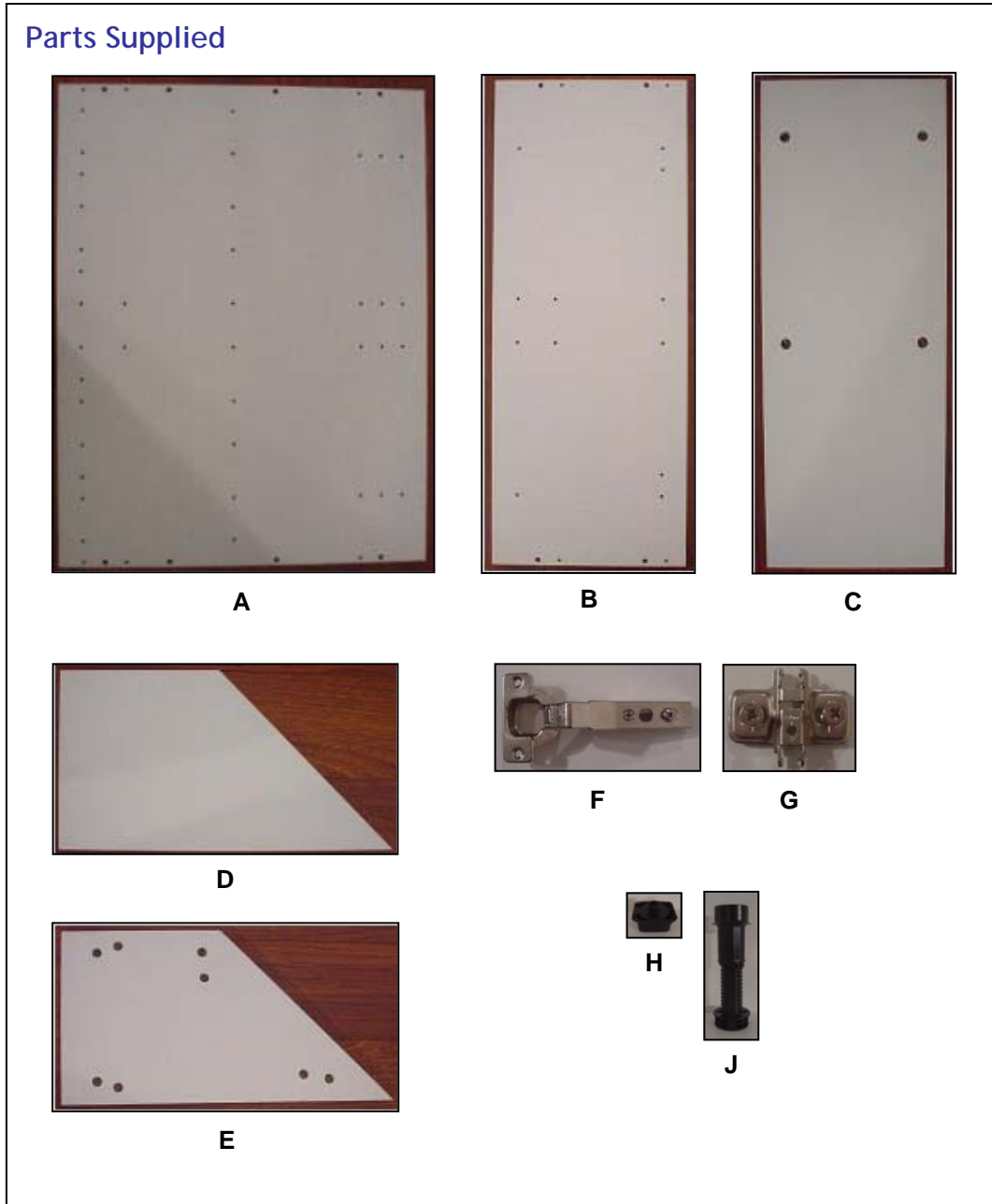
Base Chisel End Unit



CROWN IMPERIAL ASSEMBLY INSTRUCTIONS

Base Chisel End Unit

Base Chisel End Parts





CROWN IMPERIAL ASSEMBLY INSTRUCTIONS

Base Chisel End Unit

Part Letter	Part Name	Quantity
A	Large End Panel	1
B	Small End Panel	1
C	Back Panel	1
D	Shelf	1
E	Top/Bottom Panel	2
F	45 Degree Clip Hinge	2
G	Hinge Plate	2
H	Feet Blocks	4
J	Adjustable Feet	4



CROWN IMPERIAL ASSEMBLY INSTRUCTIONS

Base Chisel End Unit

A 	B 	C 	D 	E
F 	G 	H 	J 	K
L 	M 	N 	P 	Q
R 	S 	T 	U 	
V 	X 		Y 	
W 				



CROWN IMPERIAL ASSEMBLY INSTRUCTIONS

Base Chisel End Unit

Fitting Letter	Fitting Name	Quantity
A	Metal Dowel	12
B	Metal Cam	12
C	Wooden Dowel 8 x 40mm	10
D	Wooden Dowel 5 x 25mm	
E	Connecting Screws (M/F)	3 pairs
F	Black Chipboard Screw 8 x 45mm	
G	Countersunk Screw 8 x 1 ¼"	
H	Countersunk Screw 6 x 5/8"	8
J	Countersunk Screw 6 x ½"	4
K	Flange Head Screw 6 x ¾"	
L	Flange Head Screw 6 x 5/8"	
M	Euro Screw 6 x 11mm	
N	Round Head Screw 6 x 5/8"	
P	Shelf Stud	4
Q	Rubber Sleeved Shelf Stud	
R	Angle Bracket	2
S	Door Buffer Pad	2
T	5mm Plugs	14
U	35mm Bung	
V	Crown Conceal Cap	
W	Hanging Plate	
X	Plinth Clip	2
Y	Peg-o-Lock	



CROWN IMPERIAL ASSEMBLY INSTRUCTIONS

Base Chisel End Unit

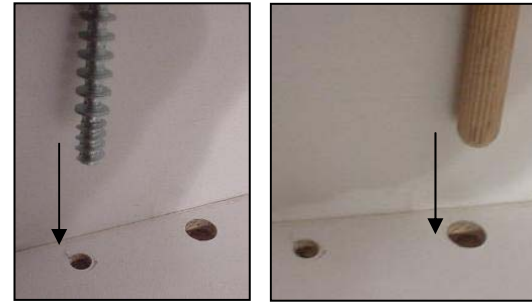
Assembly Instructions

Step 1. Insert fittings into End Panels

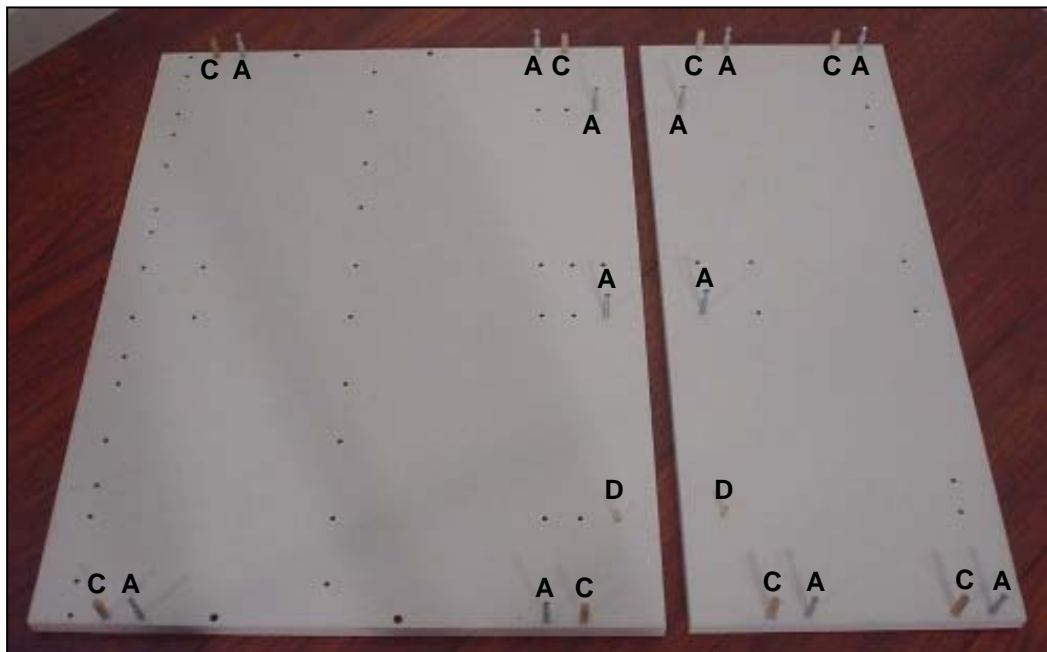
Insert Metal Dowels (fitting A) and Wooden Dowels (fitting C) into the end panel, as shown.

* NOTE: The images below depict a Right Hand Chisel End. To construct a Left Hand Chisel End, mirror the back fittings (A, A and D) in both End Panels.

1.1. Insert fittings A and C



1.2. Positions of fittings A and C on End Panels





CROWN IMPERIAL ASSEMBLY INSTRUCTIONS

Base Chisel End Unit

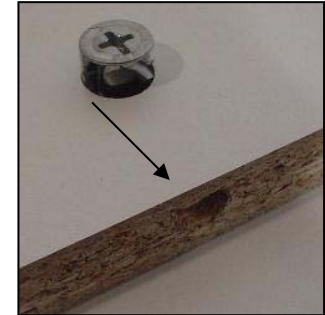
Step 2. Top/Bottom Panel

Insert the Circular Cams (fitting B) into the holes in the top panel.

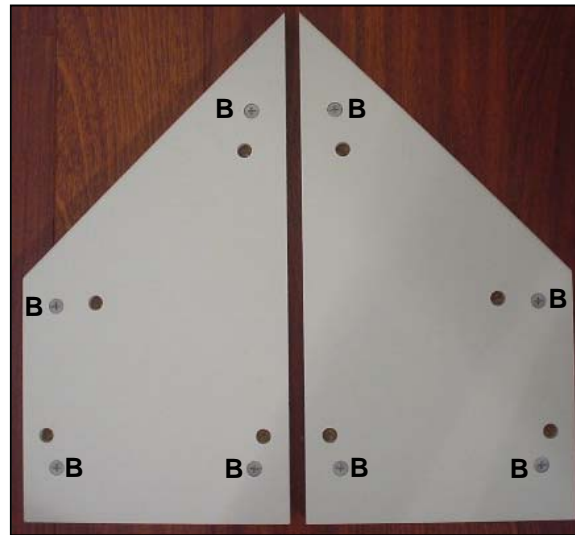
Ensure the arrows on the circular cams, are pointing outwards, towards the pre-drilled edge.

Repeat for the bottom panel.

2.1. Insert fitting B



2.2. Fitting B in Top/Bottom Panel



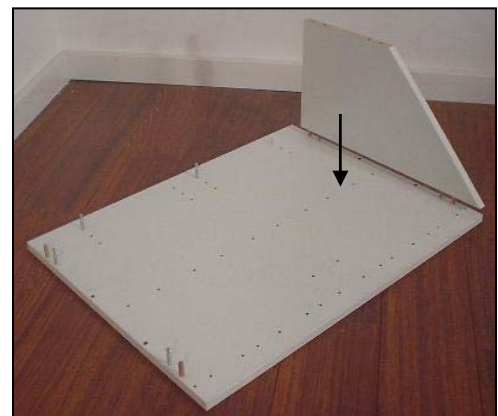
Step 3. Fit Top and Bottom Panels

Step 3.1

Take the top panel and push firmly home onto the end panel, as shown.

Ensure the cams are facing outwards.

3.1. Fit Top Panel to End Panel





CROWN IMPERIAL ASSEMBLY INSTRUCTIONS

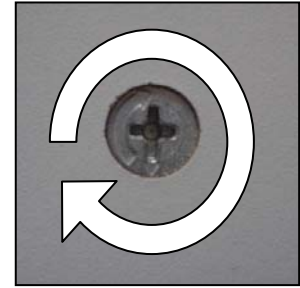
Base Chisel End Unit

Step 3.2

Using a screwdriver, turn the circular cam clockwise to lock.

Repeat for all cams.

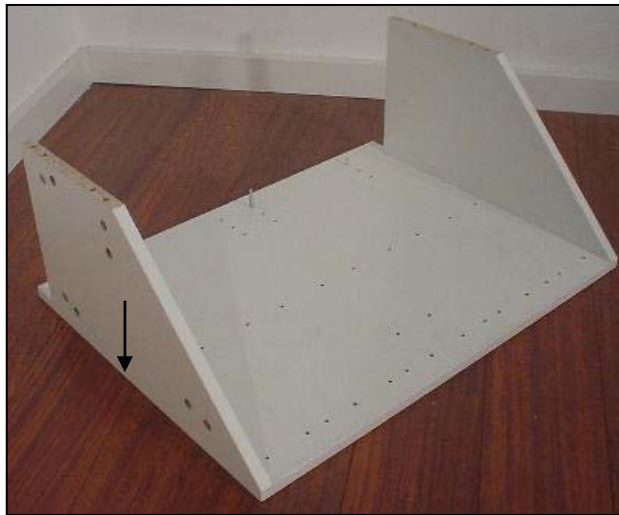
3.2. Lock Cams to secure



Step 3.3

Repeat the above, to fit the bottom panel.

3.3 Repeat to attach Bottom Panel



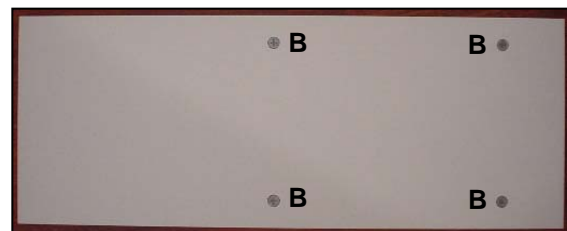
Step 4. Fit Back Panel

Step 4.1

Insert the Circular Cams (fitting B) into the holes in the back panel.

Ensure the arrows on the circular cams, are pointing outwards, towards the pre-drilled edge.

4.1. Fitting B in Back Panel





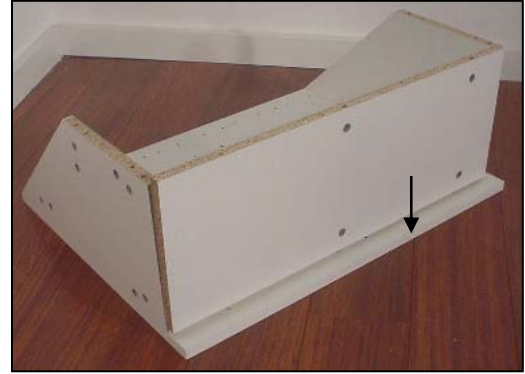
CROWN IMPERIAL ASSEMBLY INSTRUCTIONS

Base Chisel End Unit

Step 4.2

Push the back panel firmly home onto the end panel. Lock the cams as before.

4.2. Fit Back Panel

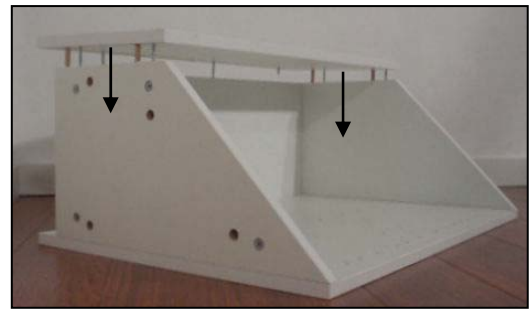


Step 5. Fit remaining End Panel

Fit the remaining end panel onto the cabinet.

Lock the cams as before, on the top, bottom and back panels.

5.1. Fit remaining End Panel

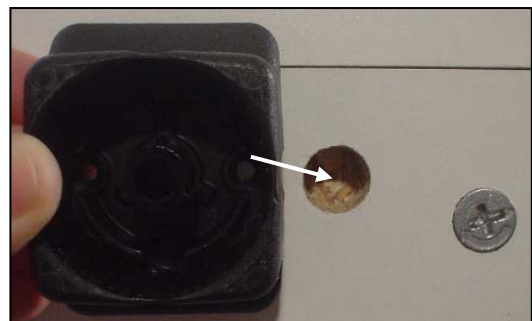


Step 6. Fitting Feet

Step 6.1 Attaching the Feet Blocks

On the bottom panel of the cabinet, locate the feet blocks with the flange facing the edge of the cabinet and push home.

6.1 Fix in Feet Blocks





CROWN IMPERIAL ASSEMBLY INSTRUCTIONS

Base Chisel End Unit

Step 6.2 Securing Feet Blocks

To secure the feet blocks, hit the spigots 'X' with a hammer, as shown, taking care not to damage the surround.

Using two countersunk screws (fitting H), per block, secure further.

6.2 Secure Feet Blocks



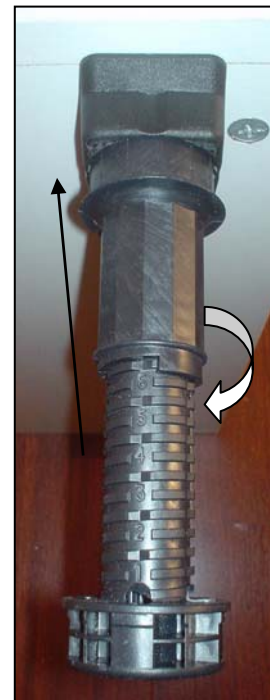
Step 6.3 Push Feet into Feet Blocks

Push the adjustable feet, into the feet blocks. Adjust the height of the feet by turning them.

There is a sequence of numbers written on the feet to aid adjusting all feet to the same height.

Repeat for all four feet.

6.3 Fit Feet and Adjust Height



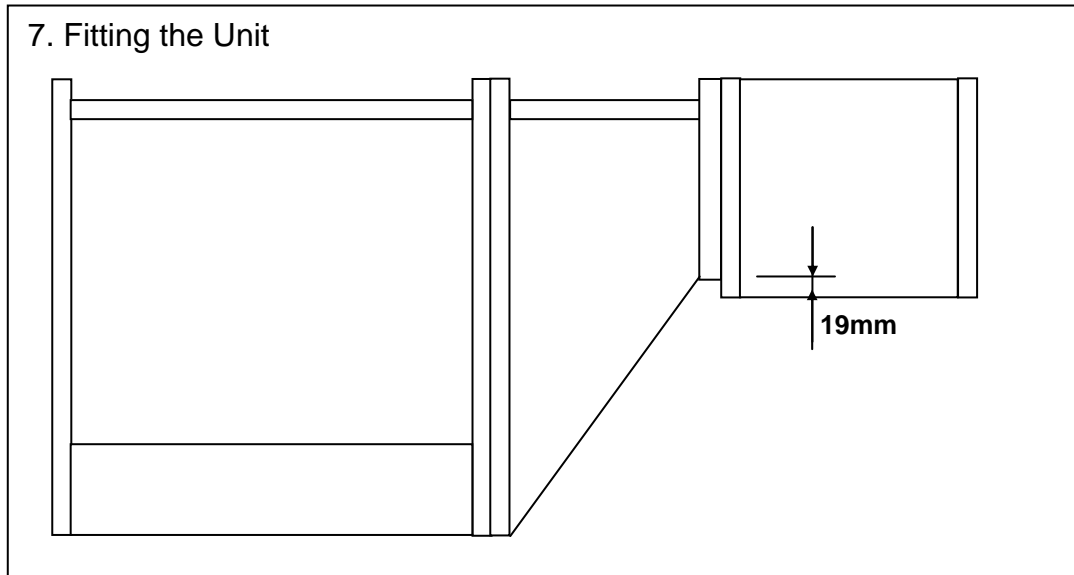


CROWN IMPERIAL ASSEMBLY INSTRUCTIONS

Base Chisel End Unit

Step 7. Fitting the Unit

When fitting the unit, ensure that there is a 19mm step to the shallower adjacent unit, as shown.



Step 8. Shelving

NOTE: Shelving is optional.

When the cabinet is installed, position shelves accordingly. Using four shelf studs (fitting N) position the shelf at the height desired.



CROWN IMPERIAL ASSEMBLY INSTRUCTIONS

Base Chisel End Unit

Complete Base Chisel End Unit

